

Belton ISD
Attendance Boundaries
Committee Meeting
January 7, 2019

Public Forum Feedback

- 28 written and emailed responses from 3 public forums
 - *11 forms requesting a “northern feeder” for the hook*
 - *3 forms requesting a “southern feeder” for the hook*
 - *10 forms requesting an alternative plan to address walkability at South Belton MS*
 - *3 regarding grandfathering/transfers*
 - *4 “others”*

Southwest Elementary/South Belton MS

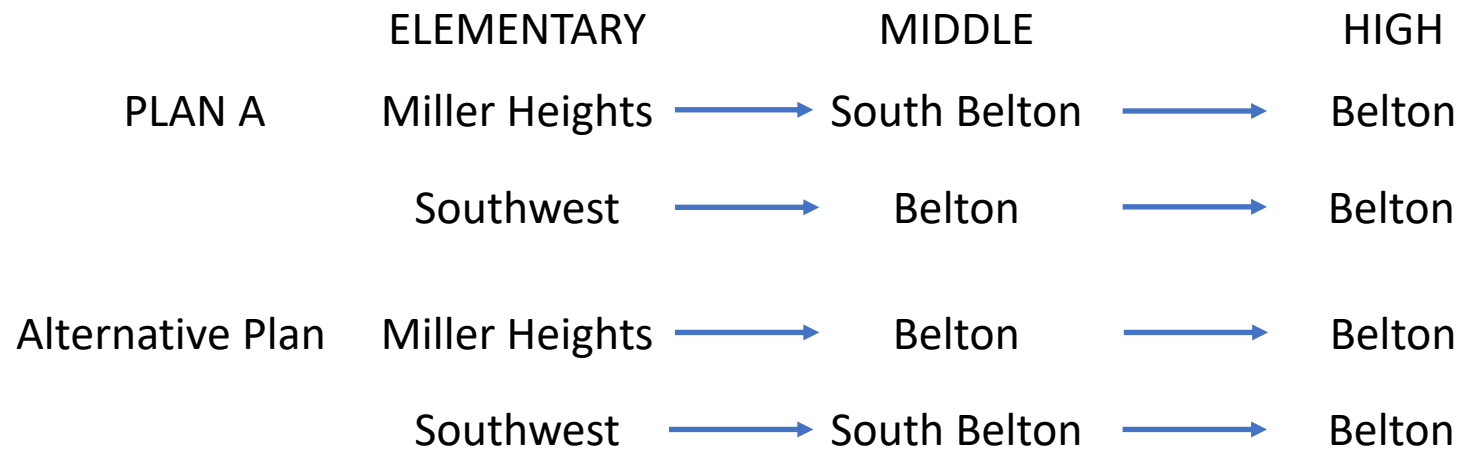
- As proposed in Plan A and Plan E, all of Southwest Elementary zone would attend Belton MS

SCHOOL	CAPACITY	2018/19	2019/20	2020/21	2021/22	2022/23	2023/24	2024/25	2025/26	2026/27	2027/28	2028/29
BELTON	971	650	649	647	667	673	704	744	765	794	813	837
LAKE BELTON	916	731	737	761	814	820	843	866	894	931	988	1,008
NORTH BELTON	1,000	802	816	863	904	898	917	940	963	985	1,021	1,036
SOUTH BELTON	1,000	631	634	643	676	684	722	771	801	842	870	904
TOTAL	3,887	2,814	2,836	2,914	3,061	3,075	3,186	3,321	3,423	3,552	3,692	3,785

- Based on comments from the Public Forums, Templeton Demographics has created alternative scenarios that address “walkability” concerns regarding students immediately surrounding South Belton MS

South Belton MS Alternative Plan

- Comments in the public forum asked to switch the Southwest Elementary feeder for the Miller Heights Elementary feeder, resulting in the following plan



South Belton Alternative Plan

PLAN A

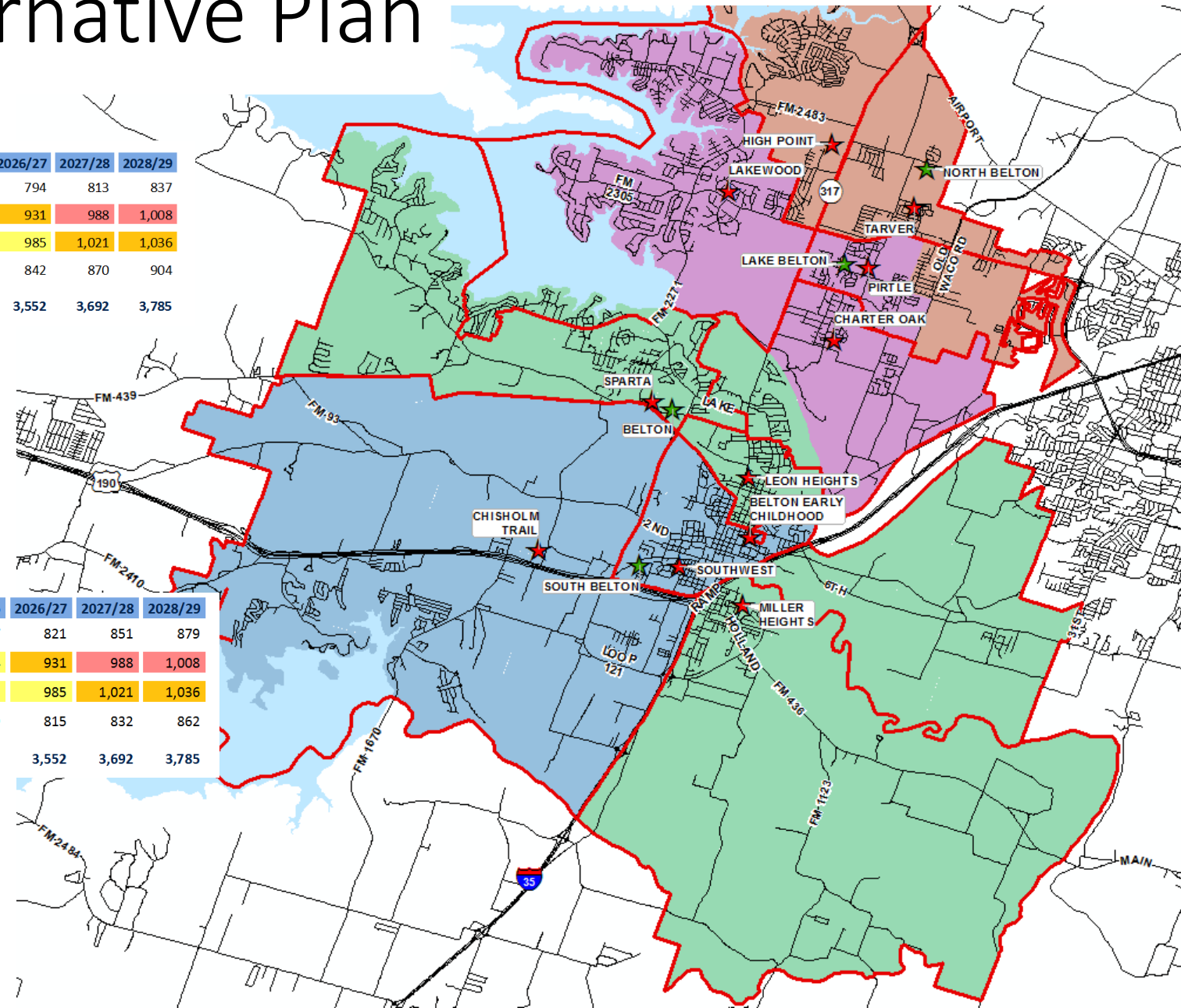
SCHOOL	CAPACITY	2018/19	2019/20	2020/21	2021/22	2022/23	2023/24	2024/25	2025/26	2026/27	2027/28	2028/29
BELTON	971	650	649	647	667	673	704	744	765	794	813	837
LAKE BELTON	916	731	737	761	814	820	843	866	894	931	988	1,008
NORTH BELTON	1,000	802	816	863	904	898	917	940	963	985	1,021	1,036
SOUTH BELTON	1,000	631	634	643	676	684	722	771	801	842	870	904
TOTAL	3,887	2,814	2,836	2,914	3,061	3,075	3,186	3,321	3,423	3,552	3,692	3,785

SCHOOL	ED	%ED
BELTON	367	50.2%
LAKE BELTON	232	33.5%
NORTH BELTON	325	41.1%
SOUTH BELTON	372	62.1%
TOTAL	1,296	46.1%

Alternative Plan

SCHOOL	CAPACITY	2018/19	2019/20	2020/21	2021/22	2022/23	2023/24	2024/25	2025/26	2026/27	2027/28	2028/29
BELTON	971	641	640	642	674	684	721	758	787	821	851	879
LAKE BELTON	916	731	737	761	814	820	843	866	894	931	988	1,008
NORTH BELTON	1,000	802	816	863	904	898	917	940	963	985	1,021	1,036
SOUTH BELTON	1,000	640	643	648	669	673	705	757	779	815	832	862
TOTAL	3,887	2,814	2,836	2,914	3,061	3,075	3,186	3,321	3,423	3,552	3,692	3,785

SCHOOL	ED	%ED
BELTON	369	50.3%
LAKE BELTON	232	33.5%
NORTH BELTON	325	41.1%
SOUTH BELTON	370	62.0%
TOTAL	1,296	46.1%

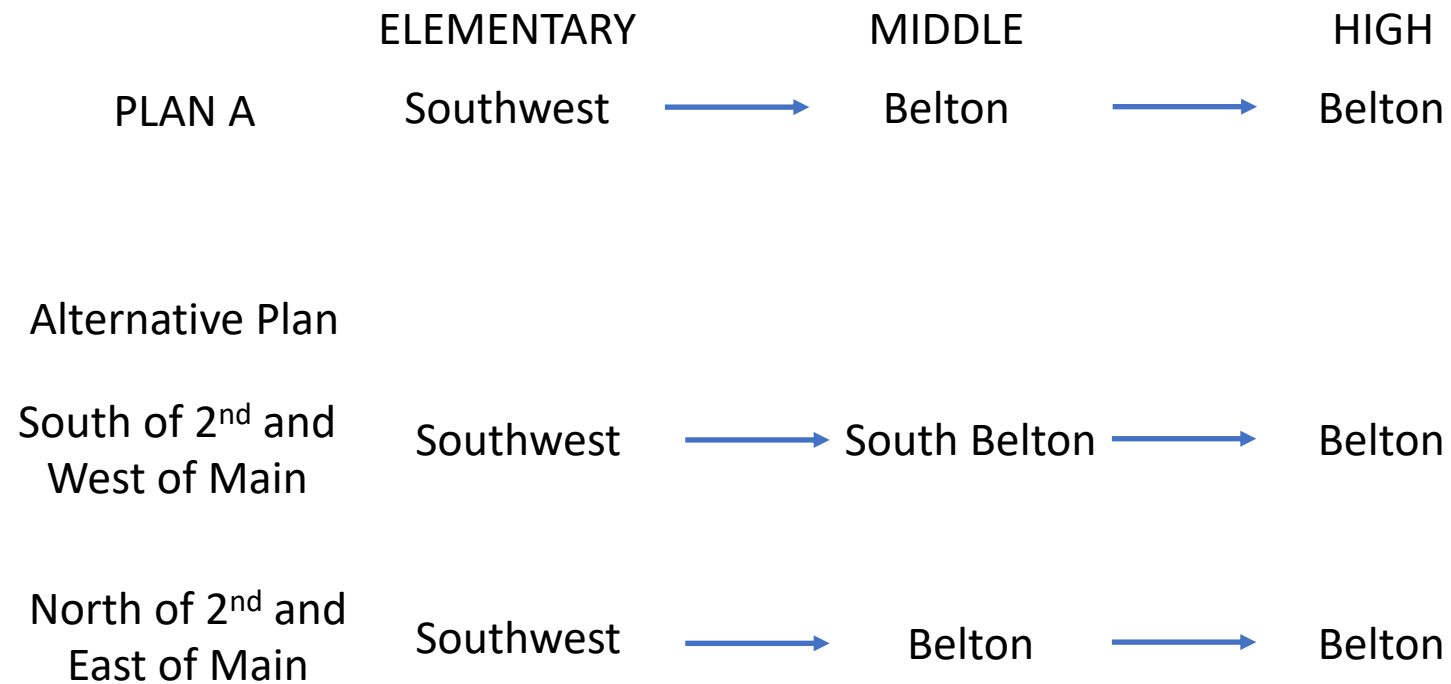


South Belton Alternative Plan Summary

- *Pure elementary to middle school feeder patterns are preserved for Southwest Elementary and Miller Heights*
- All of Miller Heights would attend Belton Middle School and all of Southwest would attend South Belton Middle School
- Enrollment forecasts and ED student percentages at each campus *remain virtually unchanged from Plan A*
- South Belton and Belton MS are forecasted to remain below campus capacity through 2028/29 with Plan A AND the Alternative Plan

South Belton MS Alternative Plan #2

- Comments in the public forum asked to split the Southwest Elementary zone feeder resulting in the following plan



South Belton Alternative Plan #2

PLAN A

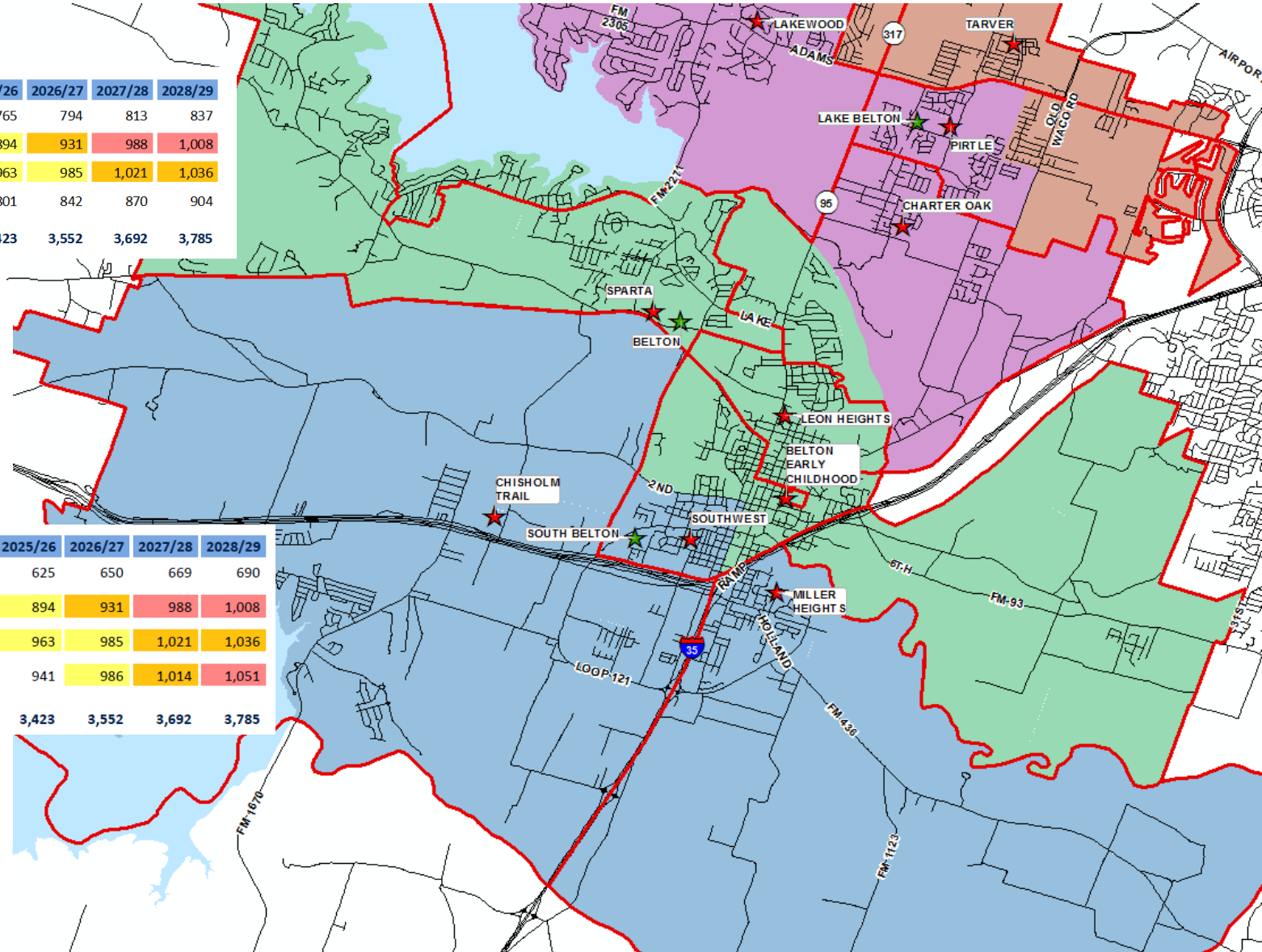
SCHOOL	CAPACITY	2018/19	2019/20	2020/21	2021/22	2022/23	2023/24	2024/25	2025/26	2026/27	2027/28	2028/29
BELTON	971	650	649	647	667	673	704	744	765	794	813	837
LAKE BELTON	916	731	737	761	814	820	843	866	894	931	988	1,008
NORTH BELTON	1,000	802	816	863	904	898	917	940	963	985	1,021	1,036
SOUTH BELTON	1,000	631	634	643	676	684	722	771	801	842	870	904
TOTAL	3,887	2,814	2,836	2,914	3,061	3,075	3,186	3,321	3,423	3,552	3,692	3,785

SCHOOL	ED	%ED
BELTON	367	50.2%
LAKE BELTON	232	33.5%
NORTH BELTON	325	41.1%
SOUTH BELTON	372	62.1%
TOTAL	1,296	46.1%

Alternative Plan #2

SCHOOL	CAPACITY	2018/19	2019/20	2020/21	2021/22	2022/23	2023/24	2024/25	2025/26	2026/27	2027/28	2028/29
BELTON	971	506	509	513	533	542	571	604	625	650	669	690
LAKE BELTON	916	731	737	761	814	820	843	866	894	931	988	1,008
NORTH BELTON	1,000	802	816	863	904	898	917	940	963	985	1,021	1,036
SOUTH BELTON	1,000	775	774	777	810	815	855	911	941	986	1,014	1,051
TOTAL	3,887	2,814	2,836	2,914	3,061	3,075	3,186	3,321	3,423	3,552	3,692	3,785

SCHOOL	ED	%ED
BELTON	246	42.3%
LAKE BELTON	232	33.5%
NORTH BELTON	325	41.1%
SOUTH BELTON	493	65.8%
TOTAL	1,296	46.1%

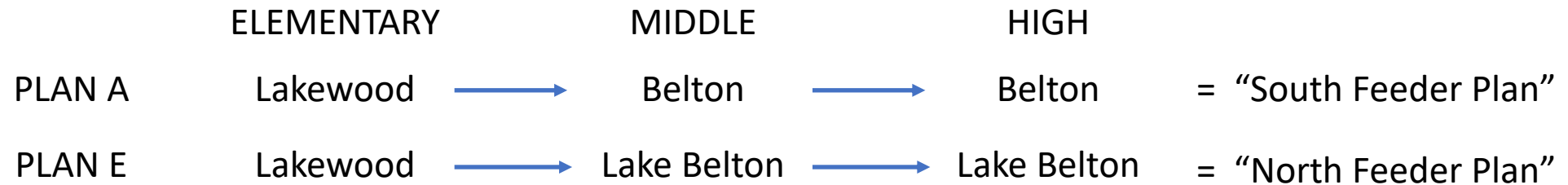


South Belton Alternative Plan #2 Summary

- *Pure elementary to middle school feeder patterns are NOT preserved for Southwest Elementary*
- Southwest Elementary would become split between Belton Middle School and South Belton Middle School
- South Belton Middle School does not have the capacity to enroll all of Southwest, Chisholm Trail and Miller Heights Elementary
- Belton Middle School would enroll *150 fewer students* than Plan A, and *South Belton Middle School would exceed capacity in 2027/28*
- Belton MS would *drop* from 50% ED in Plan A to 42%, and South Belton MS would *rise* from 62% ED in Plan A to 66% in Alternative Plan #2

Lakewood “Hook” Considerations

- The primary difference between the final plans under consideration is the Lakewood “Hook” feeder pattern:



- Within the “Hook” roughly 100 elementary students, 50 middle school students and 80 high school students reside
- In Plan E, Lake Belton MS exceeds campus capacity sooner than in Plan A, due to the addition of the Lakewood “hook”**

Lakewood “Hook” Considerations

YELLOW 95% - 100% CAPACITY
 ORANGE 100% - 105% OVER CAPACITY
 RED > 105% OVER CAPACITY

PLAN A

SCHOOL	CAPACITY	2018/19	2019/20	2020/21	2021/22	2022/23	2023/24	2024/25	2025/26	2026/27	2027/28	2028/29
BELTON	971	650	649	647	667	673	704	744	765	794	813	837
LAKE BELTON	916	731	737	761	814	820	843	866	894	931	988	1,008
NORTH BELTON	1,000	802	816	863	904	898	917	940	963	985	1,021	1,036
SOUTH BELTON	1,000	631	634	643	676	684	722	771	801	842	870	904
TOTAL	3,887	2,814	2,836	2,914	3,061	3,075	3,186	3,321	3,423	3,552	3,692	3,785

PLAN E

SCHOOL	CAPACITY	2018/19	2019/20	2020/21	2021/22	2022/23	2023/24	2024/25	2025/26	2026/27	2027/28	2028/29
BELTON	971	609	610	608	628	636	668	710	731	760	779	803
LAKE BELTON	916	772	776	800	853	857	879	900	928	965	1,022	1,042
NORTH BELTON	1,000	802	816	863	904	898	917	940	963	985	1,021	1,036
SOUTH BELTON	1,000	631	634	643	676	684	722	771	801	842	870	904
TOTAL	3,887	2,814	2,836	2,914	3,061	3,075	3,186	3,321	3,423	3,552	3,692	3,785

Lakewood “Hook” Considerations

Plan A- “South Feeder” Plan

Pros

- Forecasted enrollment remains below campus capacity for additional year
- Next elementary campus will likely have the hook going south
- Ease of transportation/ bus rides for middle and high schools

Cons

- Lakewood Elementary will be split from Elementary to Middle school

Plan E- “North Feeder” Plan

Pros

- Lakewood Elementary remains a pure feeder pattern from Elementary to Middle school

Cons

- Lake Belton Middle school exceeds capacity one year earlier
- Unbalanced middle school enrollment
- Transportation /bus ride concerns for middle and high school students