

*Belton
Independent
School
District*



Demographic
Update
September 2018

*Learn from Yesterday...
Understand Today...
Plan for the Future*



TEMPLETON
DEMOGRAPHICS

hanleywood | metrostudy



Economic Conditions – Killeen-Temple MSA (July 2018)

1.6%

2,626 new jobs
National rate 1.6%



Job Growth

Unemployment Rate



U.S. 4.1%
Texas 4.0%
Killeen-Temple MSA 4.2%
Temple 3.6%

-0.3%

3,889

185 more
sales than 2017



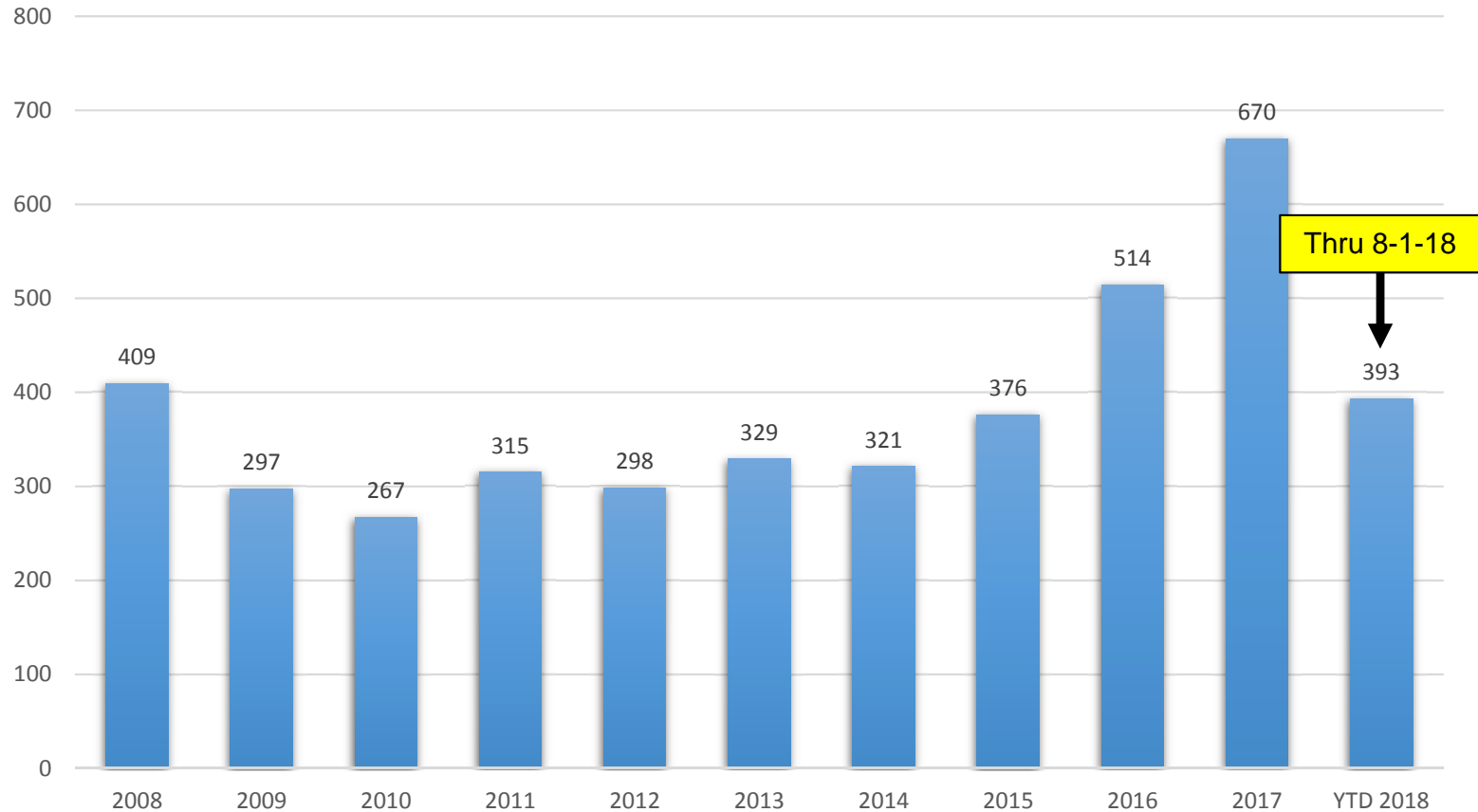
**Year to Date
Home Sales**





Belton ISD New Home Activity

New Home Construction Sales by Year



- New home sales rose more than 30.3% between 2016 and 2017
- New home sales have more than doubled since 2014
- The district is on pace to close more than 600 new homes for the second straight year

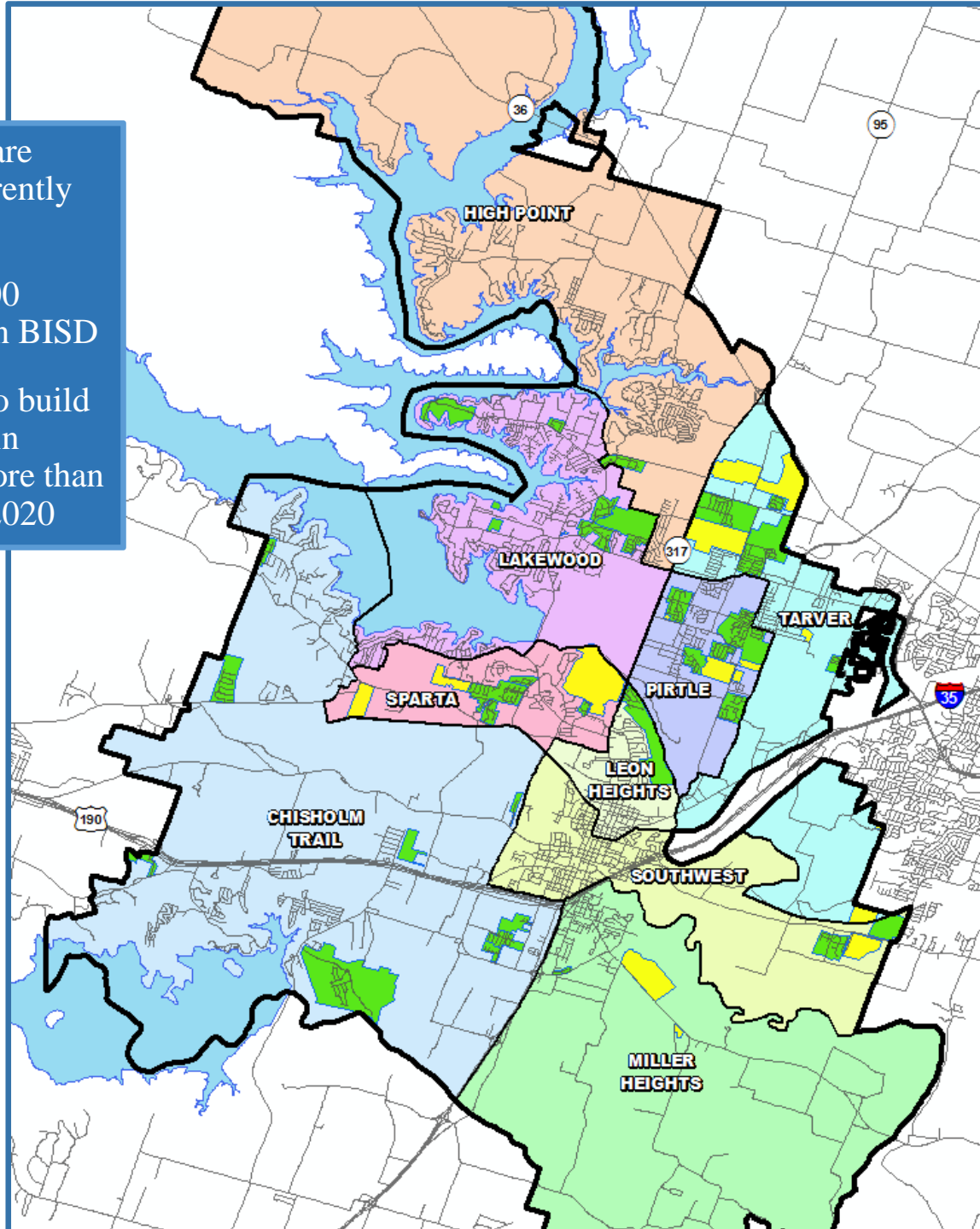


Source: Metrostudy/
Bell County Deed Records



Belton ISD District Housing Overview

- Within the district there are more than 1,750 lots currently available to build on
- There are more than 6,200 planned future lots within BISD
- Belton ISD is expected to build roughly 650-700 homes in 2018, and could build more than 800 homes in 2019 and 2020



Future Subdivisions
Active Subdivisions





Residential Yield Analysis

	2015-16	2016-17	2017-18	2018-19	3 Year Difference
Total Students	10,865	11,089	11,489	11,877	1,012
Out of District	427	440	477	479	52
Unmatched	127	68	65	23	-104
Total Students (Geocoded Inside District)	10,311	10,581	10,947	11,375	1,064
Multi-Family					
Students in MF	876	844	771	793	-83
MF Units	2,284	2,284	2,284	2,492	208
% Students in MF	8.50%	7.98%	7.05%	6.97%	-1.53%
MF Yield	0.383	0.369	0.337	0.318	-0.065
Single Family					
Students in SF	9,435	9,737	10,176	10,582	1,147
SF Parcels	15,386	15,862	16,469	17,184	1,798
% Students in SF	91.50%	92.02%	92.95%	93.03%	1.53%
SF Yield	0.613	0.614	0.618	0.616	0.003

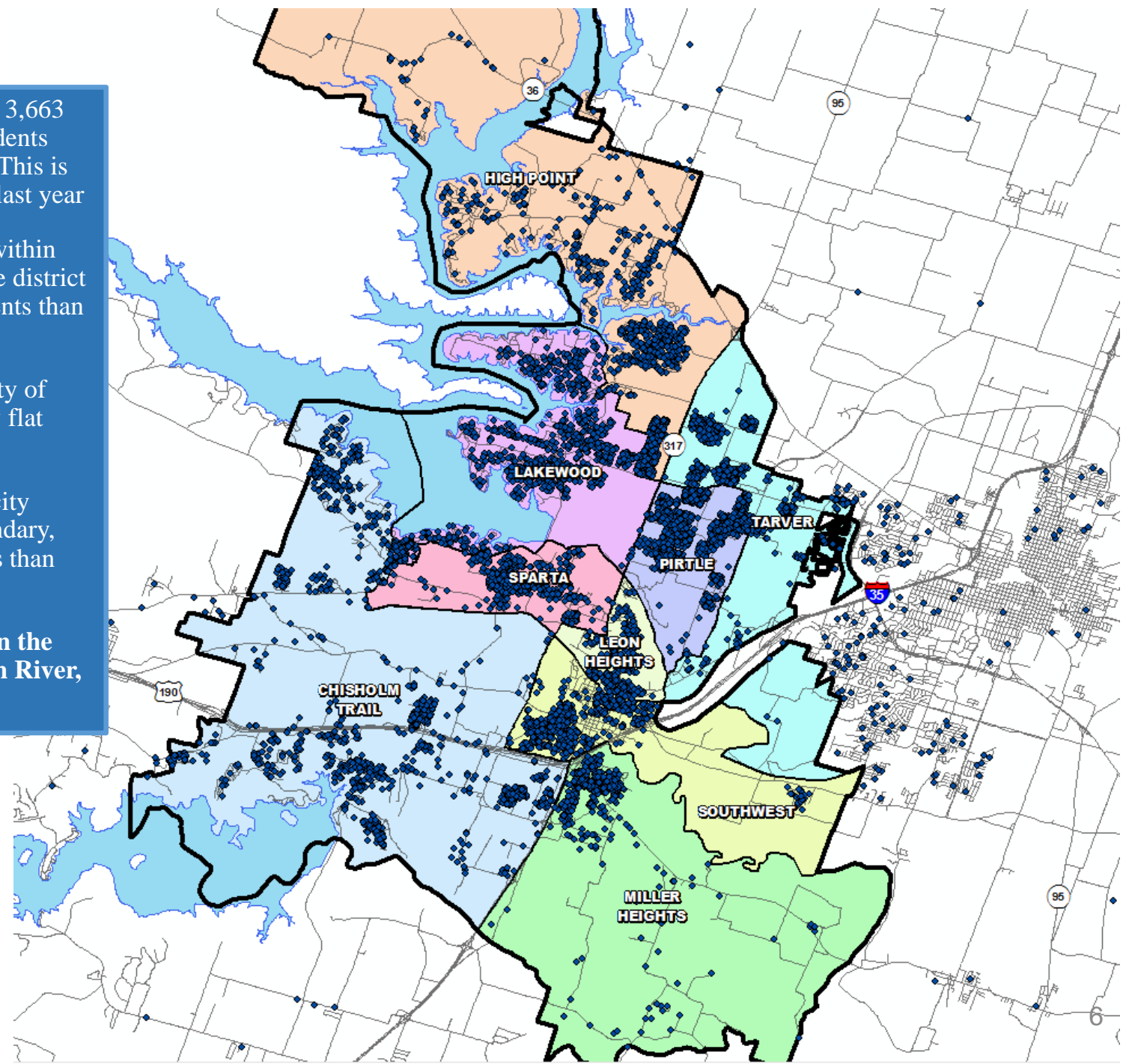


Multi-Family figures include Manufactured Home communities

Belton ISD Student Distribution



- Within the Belton ISD boundary, 3,663 students, or 32.4% of district students reside within the City of Belton. This is an increase of 119 students over last year
- 3,977 students, or 34.5% reside within Temple City limits and within the district boundary. This is 204 more students than 2017/18
- 784 students reside within the City of Morgan's Point Resort, relatively flat from last year
- 2,951 students reside outside of city limits but within the district boundary, approximately 100 more students than last year
- **5,885 students, or 51.7%, within the district reside north of the Leon River, up from 51.5% in 2017/18**

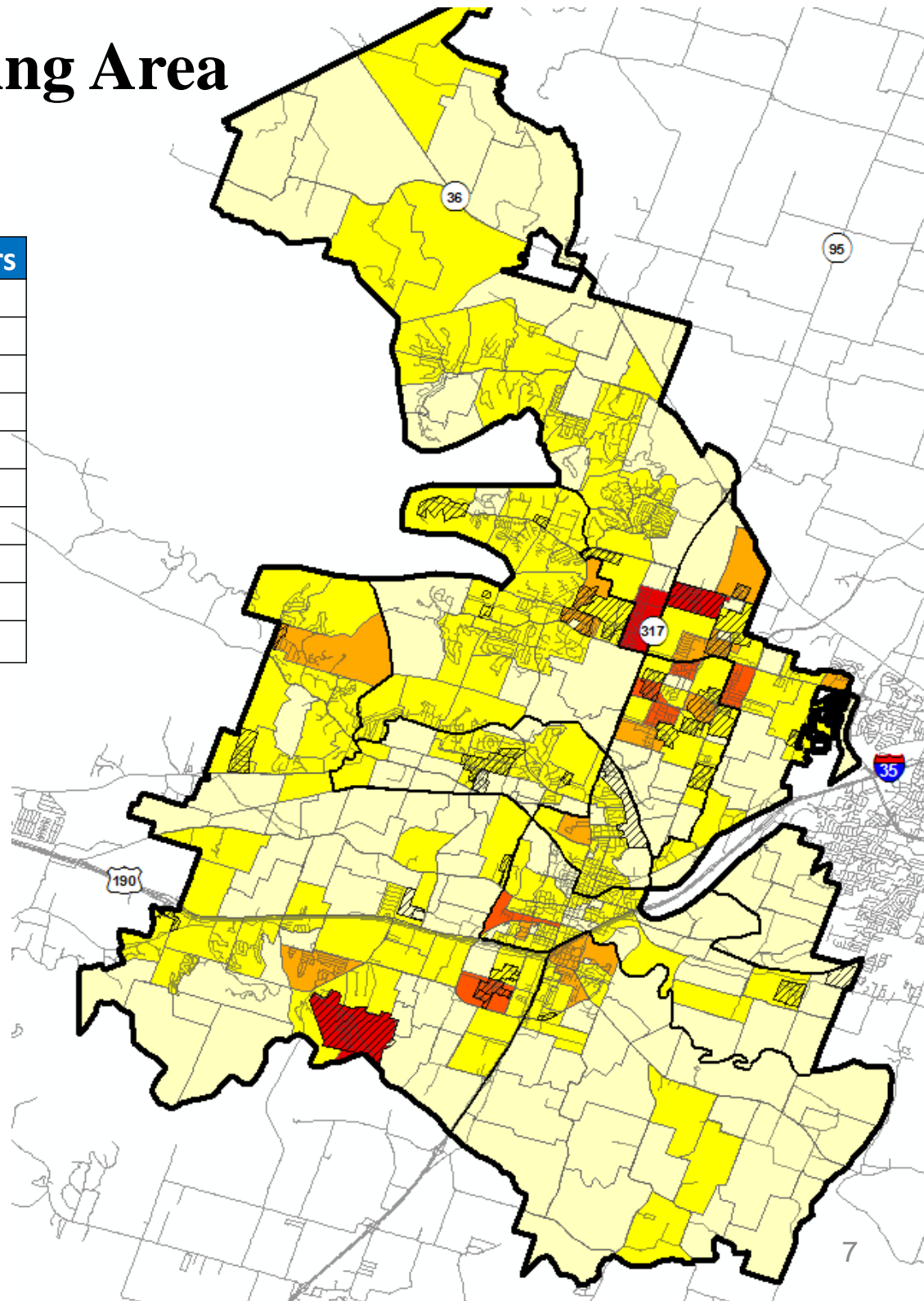
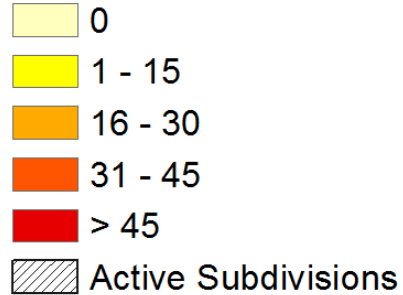




Newcomers by Planning Area

Elementary Zone	Newcomers
TARVER	269
CHISHOLM TRAIL	250
PIRTLE	228
HIGH POINT	153
LAKWOOD	147
SOUTHWEST	128
MILLER HEIGHTS	105
LEON HEIGHTS	91
SPARTA	87
Total	1,458

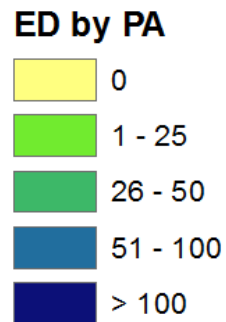
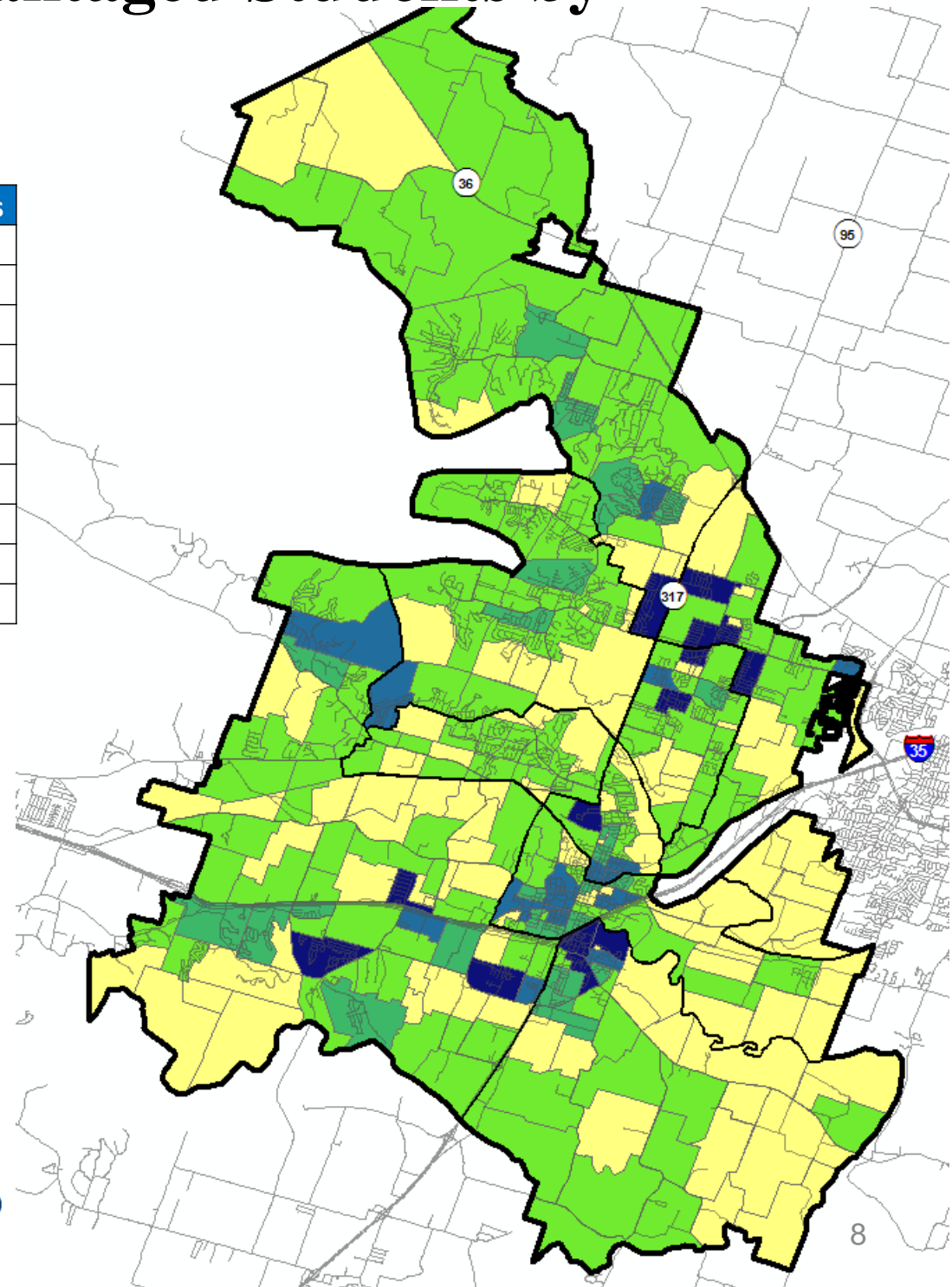
Newcomers by PA





Economically Disadvantaged Students by Planning Area

Elementary Zone	Total ED Students
CHISHOLM TRAIL	1,071
SOUTHWEST	737
HIGH POINT	679
MILLER HEIGHTS	648
TARVER	597
PIRTLE	551
LAKEWOOD	411
LEON HEIGHTS	388
SPARTA	138
Total	5,220





Ten Year Forecast

By Grade Level

Year (OCT)	EE	PK	K	1st	2nd	3rd	4th	5th	6th	7th	8th	9th	10th	11th	12th	Total	Total Growth	% Growth
2014/15	50	318	745	800	819	764	772	771	764	804	845	878	745	762	705	10,542		
2015/16	48	364	763	771	827	835	792	813	826	793	837	880	826	755	732	10,862	320	3.0%
2016/17	43	378	776	808	801	844	874	809	862	866	833	875	823	825	702	11,119	257	2.4%
2017/18	58	369	804	824	821	834	873	940	846	897	894	908	849	828	785	11,530	411	3.7%
2018/19	44	381	808	868	848	866	887	883	995	895	924	950	868	863	796	11,876	346	3.0%
2019/20	44	381	821	885	897	902	926	938	935	1,044	929	999	900	864	837	12,301	425	3.6%
2020/21	44	381	889	897	925	945	941	972	987	980	1,079	1,003	957	891	829	12,719	418	3.4%
2021/22	44	381	908	974	939	974	1,002	989	1,014	1,035	1,014	1,134	956	945	859	13,167	447	3.5%
2022/23	44	381	925	975	1,020	993	1,035	1,055	1,040	1,063	1,071	1,103	1,080	947	910	13,642	475	3.6%
2023/24	44	381	937	1,006	1,013	1,075	1,051	1,090	1,113	1,091	1,099	1,140	1,053	1,070	912	14,074	432	3.2%
2024/25	44	381	973	1,023	1,052	1,063	1,138	1,109	1,147	1,145	1,119	1,184	1,087	1,043	1,029	14,536	462	3.3%
2025/26	44	381	991	1,060	1,063	1,108	1,121	1,198	1,167	1,191	1,182	1,197	1,129	1,077	1,003	14,911	375	2.6%
2026/27	44	381	1,017	1,079	1,115	1,117	1,165	1,180	1,264	1,212	1,227	1,254	1,142	1,119	1,036	15,351	440	3.0%
2027/28	44	381	1,029	1,099	1,130	1,177	1,181	1,231	1,240	1,309	1,247	1,301	1,196	1,132	1,076	15,772	421	2.7%
2028/29	44	381	1,056	1,120	1,151	1,191	1,243	1,247	1,295	1,286	1,347	1,318	1,241	1,186	1,088	16,193	421	2.7%

*Yellow box = largest grade per year

*Green box = second largest grade per year

- Belton ISD will enroll more than 12,300 students by 2019
- 5 year growth = 2,198 students
- 2023/24 enrollment = 14,074 students
- 10 year growth = 4,317 students
- 2028/29 enrollment = 16,193 students





Ten Year Forecast

By Elementary Campus

Campus	Capacity	HISTORY	PEIMS	ENROLLMENT PROJECTIONS									
		2017/18	2018/19	2019/20	2020/21	2021/22	2022/23	2023/24	2024/25	2025/26	2026/27	2027/28	2028/29
BELTON EARLY CHILDHOOD	628	427	425	425	425	425	425	425	425	425	425	425	425
CHARTER OAK ELEMENTARY													
CHISHOLM TRAIL ELEMENTARY	792	765	798	841	897	948	980	1,024	1,063	1,103	1,136	1,170	1,215
HIGH POINT ELEMENTARY	792	716	667	659	663	661	662	664	693	710	718	732	740
JOE PIRTLE ELEMENTARY	792	762	782	829	878	925	962	984	1,003	1,030	1,052	1,093	1,131
LAKEWOOD ELEMENTARY	792	678	709	725	718	744	740	735	732	742	744	751	755
LEON HEIGHTS ELEMENTARY	265	280	263	268	272	278	275	283	286	290	293	294	298
MILLER HEIGHTS ELEMENTARY	450	327	314	344	352	366	390	400	418	437	450	466	483
SOUTHWEST ELEMENTARY	440	381	400	417	440	464	502	531	550	574	586	591	599
SPARTA ELEMENTARY	685	600	564	574	602	585	609	599	608	618	627	642	653
TARVER ELEMENTARY	792	587	663	712	747	815	883	952	1,005	1,037	1,067	1,108	1,134
ELEMENTARY TOTALS	7,220	5,523	5,585	5,794	5,994	6,211	6,428	6,597	6,783	6,966	7,098	7,272	7,433
Elementary Absolute Change		190	62	209	200	217	217	169	186	183	132	174	161
Elementary Percent Change		3.56%	1.12%	3.74%	3.45%	3.62%	3.49%	2.63%	2.82%	2.70%	1.89%	2.45%	2.21%

*Yellow box = within 5% or over stated campus capacity

- Charter Oak Elementary School is opening in the fall of 2019
- Belton ISD may enroll nearly 6,000 elementary students by 2020





Ten Year Forecast

By Secondary Campus

Campus	Capacity	HISTORY	PEIMS	ENROLLMENT PROJECTIONS									
		2017/18	2018/19	2019/20	2020/21	2021/22	2022/23	2023/24	2024/25	2025/26	2026/27	2027/28	2028/29
LAKE BELTON MIDDLE SCHOOL	916	840	912	939	1,010	1,025	1,084	1,123	1,173	1,234	1,328	1,361	1,420
NORTH BELTON MIDDLE SCHOOL	1,000	959	1,037	1,091	1,133	1,122	1,132	1,150	1,179	1,198	1,236	1,250	1,284
SOUTH BELTON MIDDLE SCHOOL	1,000	838	865	878	903	916	958	1,030	1,059	1,108	1,139	1,185	1,224
BELTON MIDDLE SCHOOL	971												
MIDDLE SCHOOL TOTALS	3,887	2,637	2,814	2,908	3,046	3,063	3,174	3,303	3,411	3,540	3,703	3,796	3,928
Middle School Absolute Change		76	177	94	138	17	111	129	108	129	163	93	132
Middle School Percent Change		2.97%	6.71%	3.34%	4.75%	0.56%	3.62%	4.06%	3.27%	3.78%	4.60%	2.51%	3.48%
BELTON HIGH SCHOOL	2,607	2,843	2,953	3,074	3,154	3,368	3,515	3,649	3,817	3,880	4,025	4,179	4,307
BELTON NEW TECH HIGH SCHOOL	500	527	524	525	525	525	525	525	525	525	525	525	525
LAKE BELTON HIGH SCHOOL	2,500												
HIGH SCHOOL TOTALS	5,607	3,370	3,477	3,599	3,679	3,893	4,040	4,174	4,342	4,405	4,550	4,704	4,832
High School Absolute Change		145	107	122	80	213	147	134	168	63	145	154	128
High School Percent Change		4.50%	3.18%	3.52%	2.23%	5.80%	3.78%	3.32%	4.02%	1.45%	3.29%	3.38%	2.72%
ALTERNATIVE CAMPUS TOTALS		0	0	0	0	0	0	0	0	0	0	0	0
DISTRICT TOTALS	16,714	11,530	11,876	12,301	12,719	13,167	13,642	14,074	14,536	14,911	15,351	15,772	16,193
District Absolute Change		411	346	425	418	447	475	432	462	375	440	421	421
District Percent Change		3.70%	3.00%	3.58%	3.40%	3.52%	3.61%	3.17%	3.28%	2.58%	2.95%	2.74%	2.67%

*Yellow box = within 5% or over stated campus capacity

- Belton Middle School will open in the fall of 2020
- Lake Belton High School will open in the fall of 2020





Summary

- The Unemployment rate in the Killeen-Temple MSA is below 4.5%.
- The number of new home sales and new students within Belton ISD is rising in both Belton and Temple.
- The district multi-family yield has declined in recent years.
- Belton ISD will open Charter Oak Elementary in 2019 and Belton Middle School and Lake Belton High School in 2020.
- Belton ISD will add 2,198 students in the next five years, for a fall 2023 enrollment of 14,074.
- The district will enroll nearly 16,200 students by 2028.